



ISO 9001:2015 Certified

Tooling Intelligence provides innovative inventory management solutions to organisations and industries across the United Kingdom and Europe.

We are experienced in providing state-of-the-art inventory management technology to our customers. We were founded in 2006 by a team of engineering experts and business specialists, who had the vision to combine cutting-edge solutions with premium customer service. We work with partners across numerous sectors, including aerospace, medical, precision engineering, oil and gas and many more.

Cutting-edge products

We have a broad range of products in our portfolio. Whether you are looking for a mobile inventory management solution for your on-the-go teams or a heavy-duty dispensing unit with complete visibility, you'll find something to suit your requirements with us.

Browse our website to learn more about our products or contact our experienced team for more information.

Access ongoing support

We know that the journey doesn't end once the installation is complete. We pride ourselves on our level of service, making sure you receive the support you need throughout the process. Whether you want to expand your existing inventory management solution or need technical help, our service team are always on hand to assist you.

Personalised service

We are an independent business, which means we always provide a high-quality, personalised service to our clients.

From the very start of your project, we work closely with you to find the right inventory management solution for your application. Our products are customisable too, which means we can help you design and create the ideal technology that meets your exact requirements.

Visit our centre

We understand that the best way to appreciate our products is to see them in action. That's why we invite our customers to our specialist Demonstration Centre to see the full potential of the solution in person.

Here, you can browse the full SupplyPro product range, as well as our service and support tools. You will have the opportunity to meet our knowledgeable team too.



Introducing SupplyLocker IV

Product-level control
for consumables,
returnable materials
and assets



SUGGESTED APPLICATIONS:

- LAPTOPS • ABRASIVES • ADHESIVES
- SEALANTS • GAUGES • MAINTENANCE SUPPLIES (MRO)
- RECHARGEABLE ITEMS • WELDING SUPPLIES
- SECURITY ITEMS • CALIBRATED INSTRUMENTS & TOOLS
- PERSONAL PROTECTIVE EQUIPMENT (PPE)

toolingintelligence.co.uk

Contact Us

01926 484511 toolingintelligence.co.uk information@toolingintelligence.co.uk

About SupplyLocker IV:

SupplyLocker® IV is the industrial solution to manage consumable and returnable tools, supplies and other assets. It allows you to stock what you need when and where you need it providing clear visibility and transparency on all levels.

SupplyLocker® Delivers:

- Individual door control according to usage requirements, such as whether the item is returnable or not, loan periods for check-in/check-out, automated lock-down, employee access, etc.
- Full usage audit trails — who used it and where it was used.

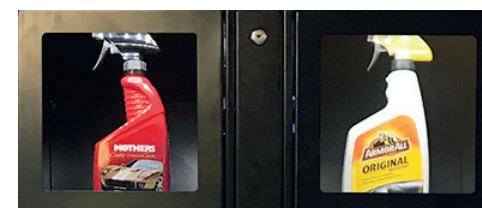
Features:

- LED lighting for enhanced product visibility
- Control assets that need calibration or inspection
- Monitor calibration status and lock down tools by either number of uses, number of days, due date — or any combination thereof
- Users can lock down tools that are not reusable and a notification is sent to management for repair
- A full audit history by asset and user usage tracking.

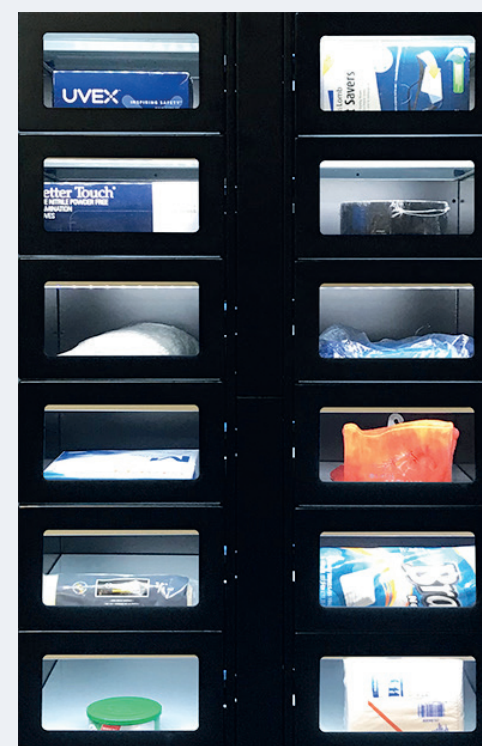


Locker and Compartment Specifications:

- 16 Doors • Dimensions: 1830mm(h) x 711mm(w) x 610mm(d) • Weight: 125kg



Top 2 Storage Compartments
13.25"w x 11.5"h



Middle 12 Storage Compartments
13.25"w x 5.96"h



Bottom 2 Storage Compartments
13.25"w x 15.45"h



Enhancements: Knock-out stamps located in back panel of each compartment can be knocked out to allow for power/network access behind locked door. Ideal for laptops, radios, detectors, power tools, etc.